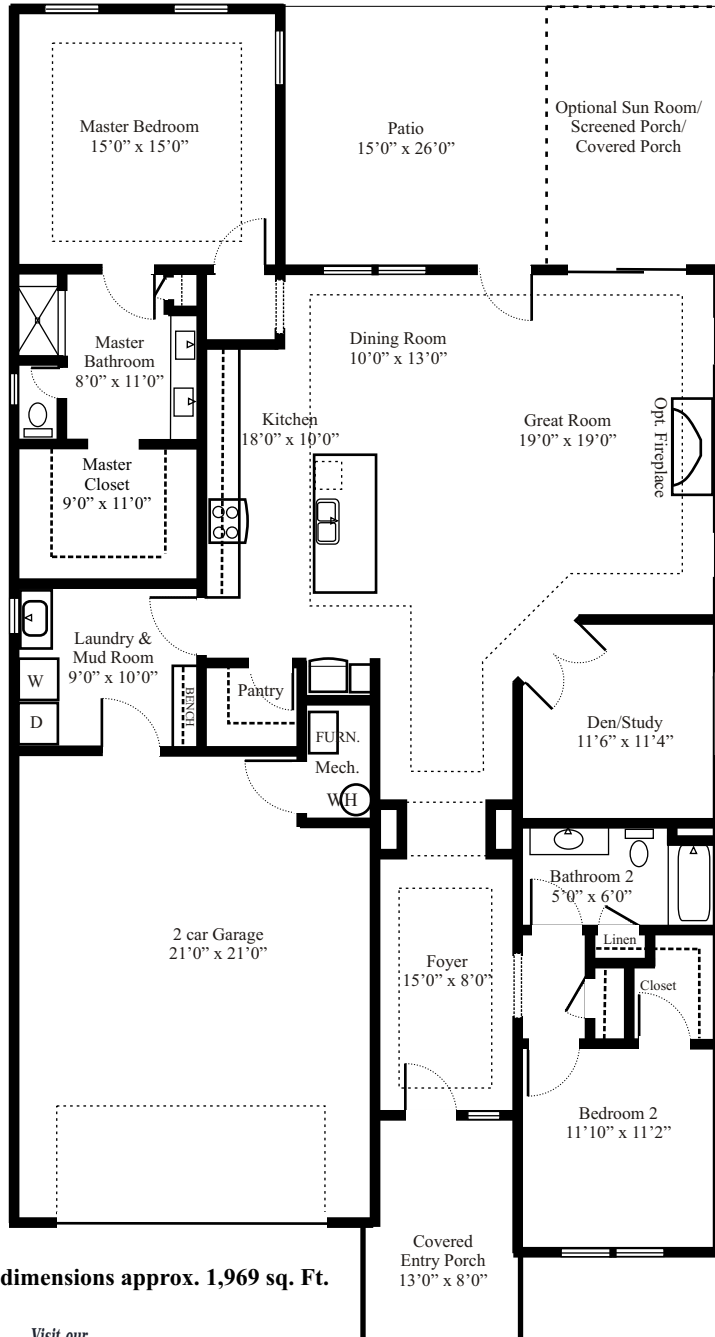




The Courtyards

At Plum Brook

Kimberly



All dimensions approx. 1,969 sq. Ft.

Visit our
FaceBook Page



MARBLEWOOD
HOMES, Inc.

Our distinctive ranch style home designs feature smart lifestyle options that combine energy efficiency and practical design elements. The Kimberly offers a 2 Bedroom split plan with 2 full Bathrooms, Den/Study, Laundry Room and 2 car garage with Attic storage. A Great Room designed living/dining and kitchen area with decorative recessed lighting along with 9' Ceilings with 10' Trays, Pantry Storage and beautifully Arched entry ways complete this wonderfully designed home.

Standard Features

- GE Appliances
- Jeld-Wen Low-E Windows with screens
- R-13 Exterior Wall and R-49 Attic Insulation
- 9' Ceilings with 10' Trays
- Island Kitchen

Call Today
419.609.0099

Alana Van Ness
Sales Director

Located inside The Sanctuary at Plum Brook off Hull Road a short distance from shopping, parks, beaches and recreation.

www.marblewoodhomes.com

Although all illustrations and specifications are believed to be correct at the time of publication, the right is reserved to make changes, without notice or obligation. Windows, doors, ceilings, and room sizes may vary depending on the options and elevations selected. This sheet is for illustration purposes only and not part of a legal contract. It is recommended that the architectural blueprints be reserved for further clarification of features as not all features are shown.