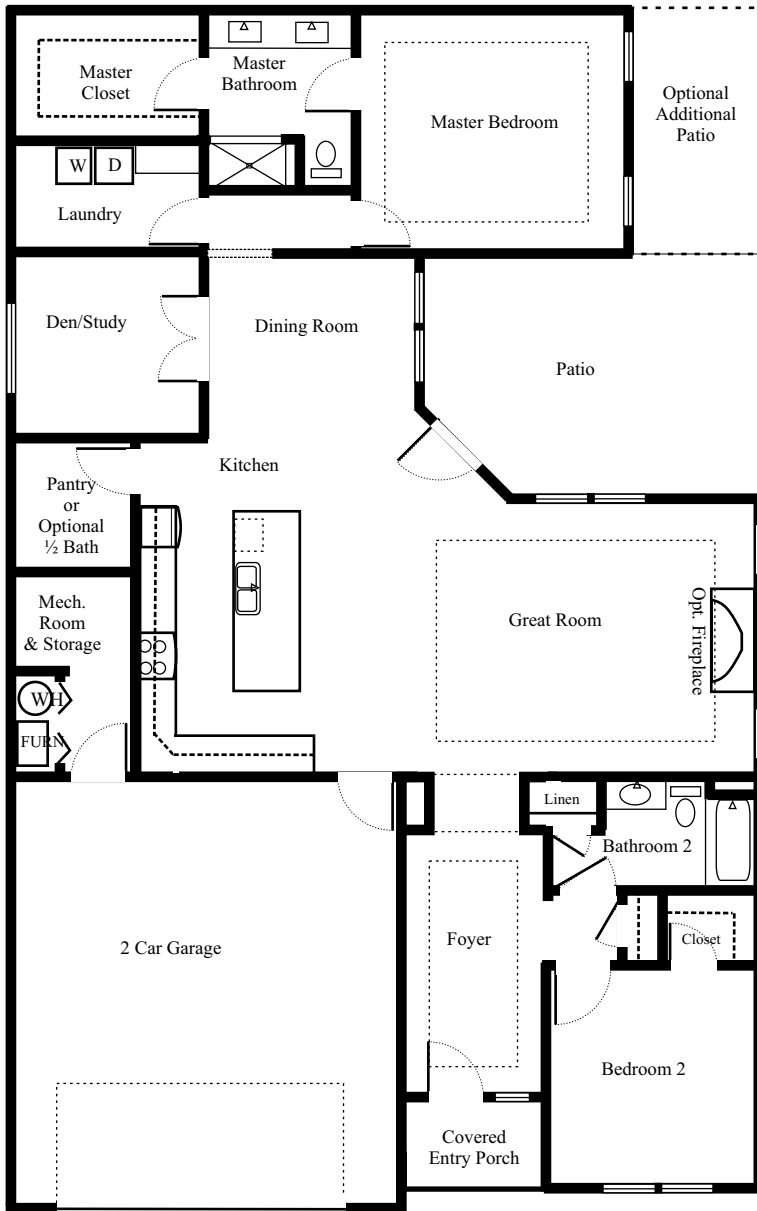




The Courtyards

At Plum Brook

Ashley



Elegant styling in an open floor plan design. Side Courtyard off Living/Dining area along with great Kitchen layout with large walk-in Pantry make entertaining a breeze. Lots of natural lighting throughout the living space and 9'0" Ceiling and 10'0" trays open up the space. Split bedroom plan allow your guest privacy and comfort. Den/Study can also double as third bedroom. Master Suite features large Master Bath and Walk-in Closet.

Standard Features

- GE Appliances
- Jeld-Wen Low-E Windows with screens
- R-13 Exterior Wall and R-49 Attic Insulation
- 9' Ceilings with 10' Trays
- Island Kitchen

Call Today

419.609.0099

*Alana Van Ness
Sales Director*

Located inside The Sanctuary at Plum Brook off Hull Road a short distance from shopping, parks, beaches and recreation.

All dimensions approx. 1,928 sq. Ft.

Visit our FaceBook Page



Although all illustrations and specifications are believed to be correct at the time of publication, the right is reserved to make changes, without notice or obligation. Windows, doors, ceilings, and room sizes may vary depending on the options and elevations selected. This sheet is for illustration purposes only and not part of a legal contract. It is recommended that the architectural blueprints be reserved for further clarification of features as not all features are shown.

www.marblewoodhomes.com